

FEE

The fee amounts to 750 Euros for academic participants and 1.300 Euros for participants from industry. The fee includes full board, accommodation in two-bed rooms, excursion as well as transportation from/to Barcelona airport.

REGISTRATION

Relevant information is found under:

www.helmholtz-hzi.de/stemcells

Registration deadline is August 12, 2011

SECRETARY (CONTACT)

Sylvia Richter

Helmholtz Centre for Infection Research (HZI)

Dept. Gene Regulation and Differentiation

Inhoffenstrasse 7, 38124 Braunschweig, Germany

Tel.: ++49 531 6181 5001

Fax: ++49 531 6181 5002

Email: hha@helmholtz-hzi.de

ORGANIZING COMMITTEE

Dr. Tobias Cantz

MPI Münster-associated Junior Research Group

“Stem Cell Biology”, Cluster of Excellence REBIRTH

Hannover Medical School (MHH)

Carl-Neuberg-Strasse 1, 30625 Hannover, Germany

Tel: ++49 511 532 5251

Email: cantz.tobias@mh-hannover.de

Prof. Dr. Francesc Gòdia

Departament d'Enginyeria Química

Universitat Autònoma de Barcelona (UAB)

Escola d'Enginyeria, Edifici Q

Bellaterra, Barcelona 08193, Spain

Tel.: ++34 93 581 4790

Email: francesc.godia@uab.es

Dr. Hansjörg Hauser

Helmholtz Centre for Infection Research (HZI)

Dept. Gene Regulation and Differentiation

Inhoffenstrasse 7, 38124 Braunschweig, Germany

Tel.: ++49 531 6181 5000

Email: hha@helmholtz-hzi.de

AIM

Stem cell technologies are of high interest to basic research as well as to application in human health. While still new procedures to generate and isolate stem cells are developed the first clinical applications are carried out. The field of stem cell understanding and technology is in an ongoing transition phase from academy to application. This is an introductory course that should provide an overview of the field, from the basic aspects to the final application. It should be of interest to those starting their research activities, both from Academia or Companies. It is also of interest for those wishing an up-date of the state-of-the-art knowledge in a short course.

The course is organized by the European Society of Animal Cell Technology, (ESACT) an international leading platform for Animal Cell Technology, organizing every two years a well recognized Congress on this field. ESACT is presenting this activity as one more contribution to the scientific and technological community involved in the use of animal cells in Biotechnology and Biomedicine. The course is further supported by the DFG funded excellence cluster REBIRTH (that is established at the Hannover Medical School) and DECHEMA.

COURSE OUTLINES

The course is planned in an intensive four day schedule. It is limited to a maximum of 20 participants to facilitate the interaction among them and with the lecturers. Lecturers are supposed to stay for most of the course duration. The course comprises lectures covering key topics in this broad field as overview lectures. The programme demands for an active participation of the attendees in paper presentations and group discussions. Topics to be presented and discussed include

- Generation of iPS cells
- De-differentiation, differentiation, trans-differentiation
- Isolation of murine and human stem and precursor cells
- Properties and quality of cells
- Cultivation – small and large scale
- Bioreactors
- Regulatory aspects, GMP
- Patenting, business and career options
- Application areas: Human treatment and pharmacology

LECTURERS / PROGRAMME

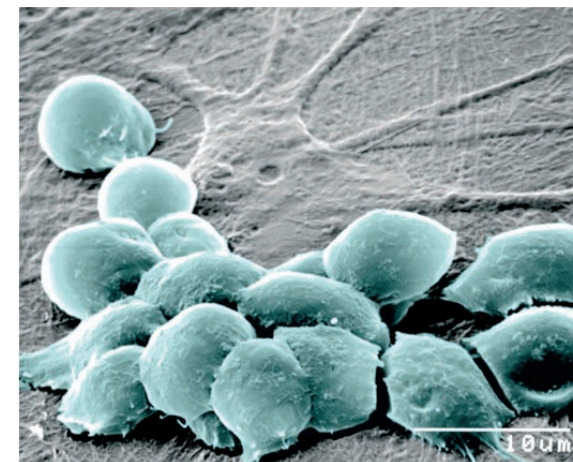
To be found in due course on our website
www.helmholtz-hzi.de/stemcells

STEM CELL TECHNOLOGY COURSE

STEM CELLS – FROM GENERATION TO APPLICATION

September 29 – October 2, 2011

Llafranch, Costa Brava / Spain



Max Planck Institute for Molecular Biomedicine / Katherina Psathaki



LOCATION AND TRAVEL INFORMATION

The course will be held in a three star hotel in a small town named Llafranch, in the heart of Costa Brava, Girona, Spain, providing a cosy and relaxing atmosphere for the attendees. The Hotel Terramar (www.hterramar.com) is right on a very nice sandy beach. The course is scheduled by early October, when the climate should be very pleasant, not too hot.



Travel organization to the meeting site is up to the participants. Access from Barcelona Airport (90' by car) is suggested. Buses from the airport or Barcelona central train station will be organized for groups with feasible arrival times. Additional nights in the hotel should be directly booked by the participants.

SOME IMPRESSIONS FROM OUR LAST YEAR'S COURSE

PARTICIPANTS and LECTURERS



BOAT TRIP



DISCUSSIONS



BEACH in front of the hotel

